



True next generation motherboards have arrived with the EVGA X79 SLI® ! This motherboard packs in the latest technologies to give you an uncompromised experience!

Uncompromised Performance – Unparalleled memory bandwidth with true quad channel DDR3 memory support, and Intel® Turbo Boost Technology 2.0 gives you intelligent computing by optimizing performance on the fly! Up to 3-way SLI® gives you the expansion you need to maximize your graphics performance.

Uncompromised Power – High performance 6 phase PWM and POSCAP capacitors deliver clean, optimal power to your system for maximum overclocking. Also, with built in EVGA EVBot** support, you can overclock on the fly from the palm of your hand.

Uncompromised Features – This board is loaded with the latest technologies like a full UEFI BIOS, USB 3.0 Ports, SATA III/6G support, PCI-E 3.0* ports, E-SATA, a true next generation board layout, and more!

*Pending PCI Express® 3.0 supported CPU / **Sold Separately

KEY SPECS

- Supports Intel® Core™ i7 Processor family for LGA-2011 socket
- Intel® X79 Chipset
- Enthusiast Layout Supporting 2-Way SLI®, 3-Way SLI®, & CrossfireX™
- 4 DIMM Quad-Channel DDR3 2133MHz+ (Up To 32GB)
- PCI Express® 3.0 Ready*
- 3 PCI Express® Graphics Expansion Slots
- 2 PCI Express® x1 slots
- 10 USB 2.0 Ports (two rear panel, eight onboard)
- 4 USB 3.0 Ports (four rear panel)
- 2 SATA III/6G Ports
- 4 SATA II/3G Ports (2 E-SATA)
- 1 1394b Port (Firewire, One onboard)
- 1 Gigabit Ethernet Port (10/100/1000)
- 8 Channel High Definition Audio + Optical
- ATX Form Factor

DESIGN DETAILS

Supported CPUs - Intel® Core™ i7 Socket 2011
Socket Type - LGA2011

PCH - Intel® X79

DIMM QTY - 4 DIMM Slots

Memory Type - DDR3 800/1066/1333/1600/1866/2133MHz+
Memory Capacity - 32GB

SATA II 3.0Gb/s Ports/Controller - 4 / X79 PCH

SATA III 6.0Gb/s Ports/Controller - 2 / X79 PCH

E-SATA 3.0Gb/s Ports/Controller - 2 / Marvell 6121

RAID Support - RAID 0, 1, 5, 10, JBOD

USB 2.0 Ports/Controller - 10 / Intel® X79 PCH

USB 3.0 Ports/Controller - 4 / VLI VL800-Q8

Network Speed - 10/100/1000

Network Ports/Controller - 1 / Marvell 88E8059

Audio - 8 Channel HD Audio

Audio Controller - Realtek ALC898

PCI-E Slot Arrangement - 1x16, 2x16 or 3x8

PCI-E x16 Mechanical Slots - 3

PCI-E x1 Slots - 2

BIOS Type - AMI / UEFI

Software - EVGA E-LEET Tuning Utility

Fan Headers - 7

DIMENSIONS

- Width: 9.6in – 243.8mm
- Length: 12in – 304.8mm
- Form Factor: ATX

ACCESSORIES

- EVGA Driver Installation Disc with EVGA E-LEET
- Rear Case I/O Panel
- 2 SATA 3G Data Cables
- 2 SATA 6G Data Cables
- 2 SATA Power Adapters
- 2 Port USB / 1394 Firewire Port Bracket
- 2 Port USB 3.0 Bracket
- 2-way SLI Bridge
- Visual Installation Guide
- Manual



PRODUCT WARRANTY

This product is covered under EVGA's 3 year warranty which covers parts and labor. Further warranty extension is available upon registration within 30 days of purchase. For more details please visit www.evga.com/warranty



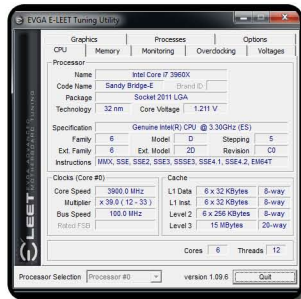
6 PHASE PWM

Clean variable power switching



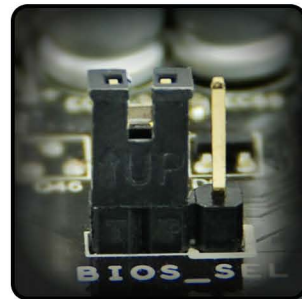
E-LEET TUNING UTILITY

Adjust your overclocking in 0.5.



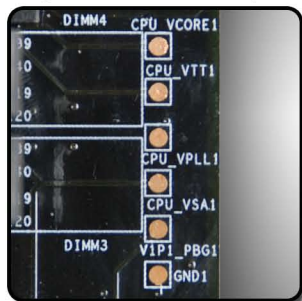
DUAL BIOS SUPPORT

Use 2 separate profiles!



EZ VOLTAGE READ POINTS

Easy read dedicated read points



ONBOARD CPU TEMP MONITOR

Monitor CPU temps quickly & easily



CLEAR CMOS, POWER & RESET

System essentials at the touch of a button



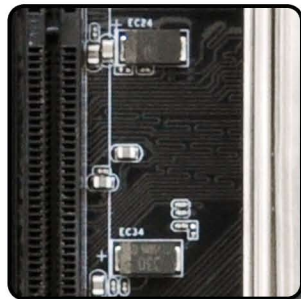
100% SOLID-STATE CAPACITORS

Higher quality, longer lifespan



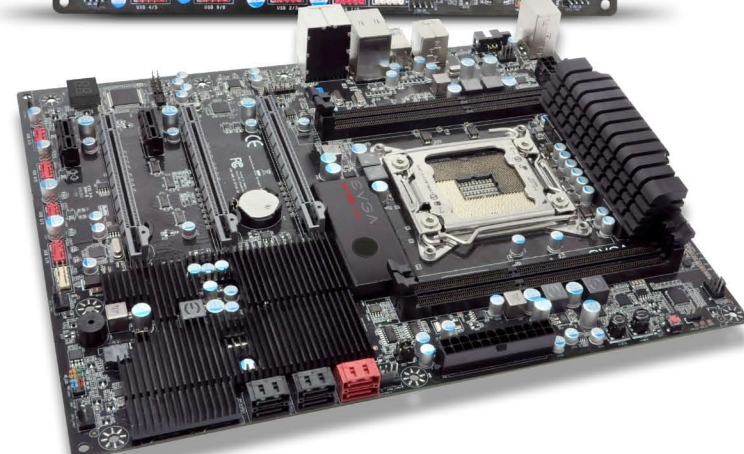
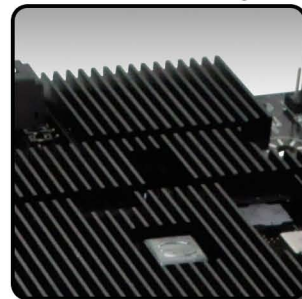
POSCAP CAPACITORS

Low impedance offers better performance



PASSIVE CHIPSET HEATSINK

No fans, lower noise, longer lifespan



PRODUCT WARRANTY

This product is covered under EVGA's 3 year warranty which covers parts and labor. Further warranty extension is available upon registration within 30 days of purchase. For more details please visit www.evga.com/warranty/

